



# MONTHLY MEMBERSHIP PROGRESS REPORT

District 323 C

Results as of: 6/30/2015

GMT: KAMLESH JAIN

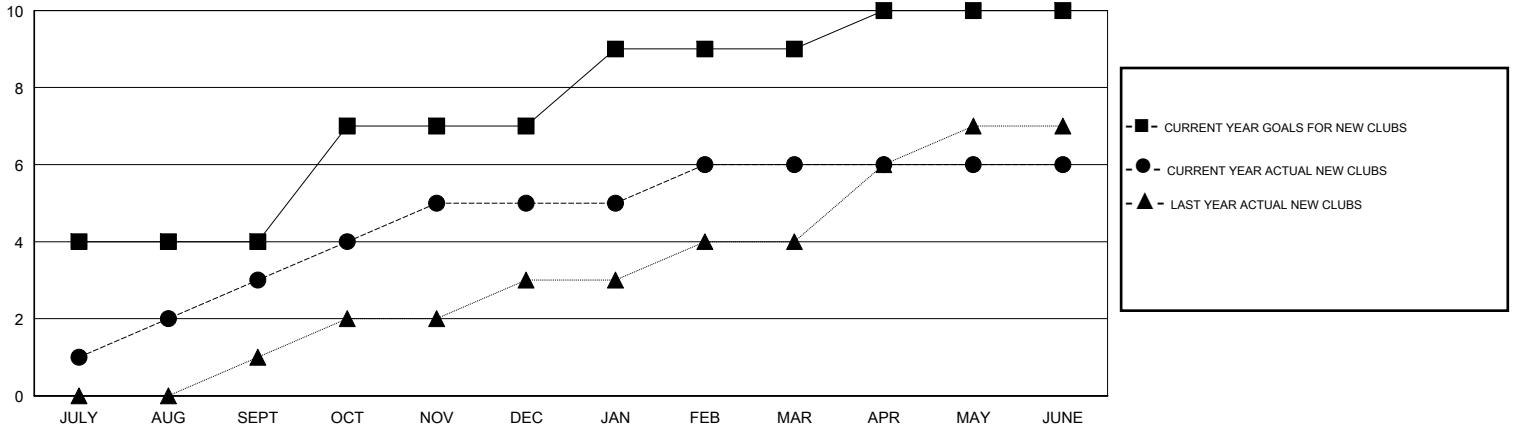
LOCATION INDIA

GMT CA 6

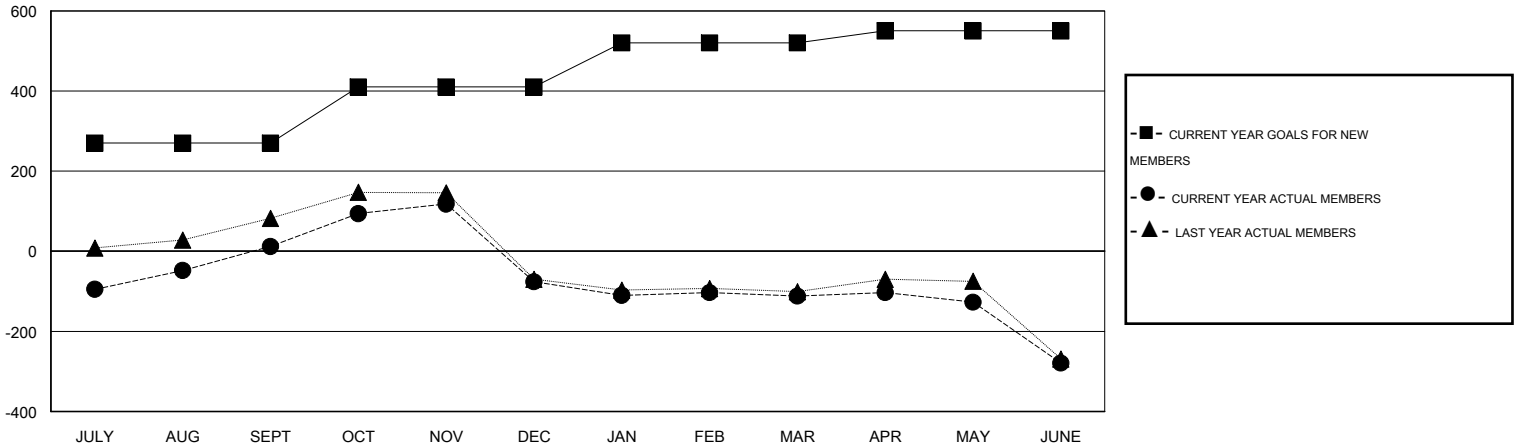
Clubs				
RESULTS FOR 2014-2015				
QUARTER	NEW CLUB GOAL	NEW CLUBS	DROPPED CLUBS	NET GAIN/LOSS
JULY/AUG/SEPT	4	3	0	3
OCT/NOV/DEC	3	2	8	-6
JAN/FEB/MAR	2	1	3	-2
APR/MAY/JUNE	1	0	8	-8

Members				
RESULTS FOR 2014-2015				
QUARTER	NEW MEMBER GOAL	CHARTER AND NEW MEMBERS ADDED	DROPPED MEMBERS	NET GAIN/LOSS
JULY/AUG/SEPT	270	160	148	12
OCT/NOV/DEC	140	120	208	-88
JAN/FEB/MAR	110	73	109	-36
APR/MAY/JUNE	30	106	273	-167

GOALS AND ACTUAL NEW CLUBS CUMULATIVE



GOALS AND ACTUAL MEMBERS CUMULATIVE



DROPPED CLUBS: 19
-------------------

57 CLUBS OF 93 ADDED 1 OR MORE NEW MEMBERS

GENDER DISTRIBUTION	
MALE	2,044 (78.46%)
FEMALE	561 (21.54%)

DROPPED MEMBERS	
DECEASED	11
CLUB CANCELLED	368
OTHER	359
<b>TOTAL</b>	<b>738</b>

[CLICK HERE FOR HEALTH ASSESSMENT DATA](#)

FAMILY UNIT MEMBERS	661
HEAD OF HOUSEHOLD	305
NON-HEAD OF HOUSEHOLD	356